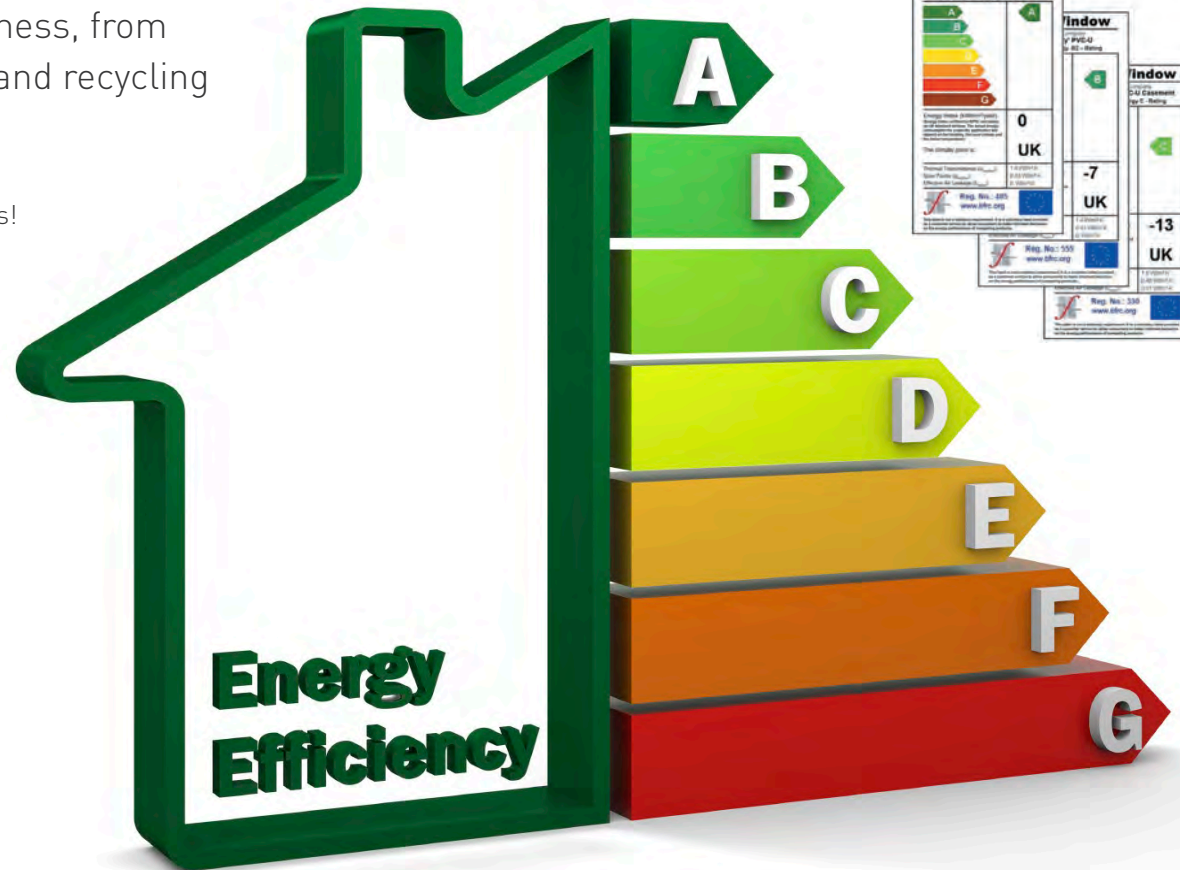


*Signature*  
Energy-Efficiency

## Energy-efficient windows and glazing that won't cost the earth!

We are committed to the integration of economic, social and environmental factors in all elements of the business, from raw materials and manufacturing to installation and recycling

- ✓ uPVC windows recycled 10 times and have a lifespan of 400 years!
- ✓ All of our range of windows carry a recycled content of up to 40% – using uPVC that otherwise may have gone into landfill.
- ✓ Use of min of recycled material
- ✓ BFRC registered
- ✓ Energy ratings to A +30
- ✓ Energy savings trust recommended
- ✓ Window scrappage scheme with installers
- ✓ CO<sub>2</sub> aware
- ✓ Warm Edge Technology



*Make sure you buy an energy rated window, look for his certificate*

## uPVC windows recycled 10 times and a lifespan of 400 years... that's a bonus!

All of our range of windows carry a recycled content of up to 40% - using uPVC that otherwise may have gone into landfill.

- Firstly, old PVC-U frames and off-cuts are collected from site in containers.
- Windows can be accepted glazed or unglazed, complete with ironmongery.
- Windows are transferred into an industrial shredder where huge rollers break them up ready for sorting.
- Magnetic metals are separated out first.
- Remaining metals are removed using a different process.
- An intensive separation system splits the white material from the coloured PVC-U.
- Specialist, high spec technology is utilised to pelletise the PVC-U to an outstanding level of purity.
- Clean, contamination-free pellets are returned to manufacturing facilities.
- Pellets are extruded into high quality British profile systems and are ready for new window fabrication.



# As you would expect, Signature Windows hold an A rating and demonstrates the highest energy efficiency levels.

Energy saving is something we all could do more of, keep our bills low and improve the future for our children's children. We are continually striving for efficiency and installing new PVCu windows, doors and conservatories can drastically reduce energy consumption in your home.

Accomplish two aims in one easy step...

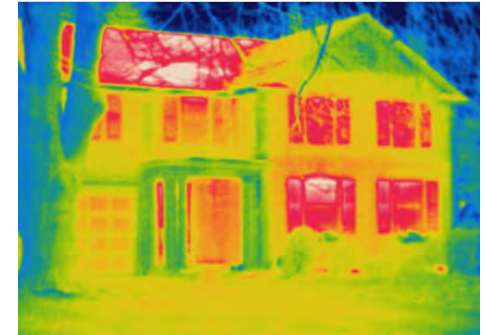
Save hundreds of £'s a year and reduce your carbon footprint.

A-Rated - As you would expect, Signature Windows demonstrates the highest energy efficiency levels.

Low emissive glass - A special coating that reflects heat back into your home, thus reducing the heat loss through your glazing.

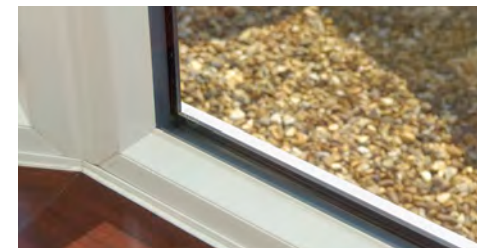
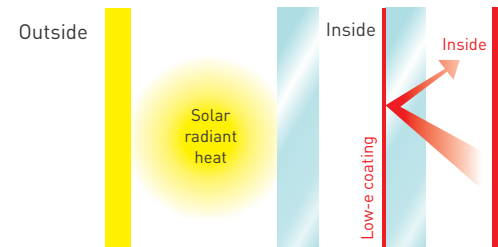
Insulated spacer bars - A type of spacer material used to separate the glass lies in an insulating glass window unit.

Insulating technology as standard - A standard double-glazed window will lose 2.25 times more heat than a standard, non-energy rated window build today. All Signature Windows come with this insulating technology as standard, saving you money on bills and keeping you cosy



## Heat escape routes

Take a look at this image showing heat loss from a house. Red shows where most heat is lost - through the windows and roof.



Signature

Environmentally Friendly & Energy Efficient

# Upgrading to *Signature* **A Rated** windows you could save...

|                                | 1 YEAR SAVINGS              |                    |        | 10 YEAR SAVINGS             |                    |        |
|--------------------------------|-----------------------------|--------------------|--------|-----------------------------|--------------------|--------|
|                                | CO <sub>2</sub><br>(TONNES) | CARBON<br>(TONNES) | ENERGY | CO <sub>2</sub><br>(TONNES) | CARBON<br>(TONNES) | ENERGY |
| <b>EXISTING WINDOW</b>         |                             |                    |        |                             |                    |        |
| Wooden frame, single glazed    | 2.20                        | 0.60               | £325   | 21.95                       | 5.99               | £3,730 |
| Steel frame, single glazed     | 3.16                        | 0.86               | £468   | 31.59                       | 8.61               | £5,367 |
| Aluminium frame, single glazed | 4.70                        | 1.28               | £697   | 47.04                       | 12.83              | £7,992 |
| Aluminium frame, double glazed | 3.68                        | 1.00               | £545   | 36.76                       | 10.03              | £6,246 |

\*CALCULATIONS ARE BASED ON AN INFLATION RATE OF 3% AND A DETACHED PROPERTY USING ELECTRIC HEATING (AT 8.3P/KWH)

*Signature*

Signature

Built up to a standard  
not down to a price

[www.signature-windows.com](http://www.signature-windows.com)